

Itinerary for Highlights of Kenya

Summarised Itinerary

Day 1 and 2	Amboseli Serena Safari Lodge - Standard Room (Full Board)
Day 3	Serena Mountain Lodge - Standard Room (Full Board)
Day 3	Lunch at pampa Churrascaria
Day 4 and 5	Samburu Game Lodge - Standard Room (Full Board)
Day 6	Sweetwaters Serena Camp - Standard Room (Full Board)
Day 7	Flamingo Hill Camp - Tent (Full Board)
Day 8	Lunch at Sarova Mara
Day 8,9 and 10	Mara Serena Safari Lodge - Standard Room (Full Board)

Day 1

On arrival at Jomo Kenyatta International Airport, you will be met by our Representative and your driver guide. After a short safari briefing explaining what you can expect over the coming days, you will head straight out on safari heading south towards Amboseli National Park arriving at the Amboseli Serena Hotel in time for a late lunch (providing clients have arrived on a morning flight). The Amboseli Serena Hotel is wonderfully nestled in the trees overlooking the golden Savannah plains and is the perfect place to be based while exploring the park. A game drive is on the itinerary for the late afternoon. Until then unpack and relax with a cold 'Tusker' beer.

Accommodation at Amboseli Serena Safari Lodge - Standard Room (Full Board)

Nestled in the foothills of Mt. Kilimanjaro – Africa highest Mountain and beside a copse of giant acacia trees and gently flowing springs lies the Amboseli Serena Safari Lodge, with Kilimanjaro's 6,000-meter-high snow capped peaks rising behind it. The lodge setting is magnificent with the park boasting more big game than almost anywhere else in Africa.



Amboseli lies at the foot of Africa's highest mountain, Mt. Kilimanjaro (19,340ft). The mountain dominates every aspect of the park and you can get the best views of its snow-capped peak from Amboseli. The parks fragile ecosystem supports a variety of game and is famous for its large herds of elephant. Swamps and springs, fed by underground rivers from Kilimanjaro's melting snow, offer a watering place for the wildlife and birds during the dry season. There is plenty to do, including game viewing, walking, visit a Maasai village or visit the Amboseli Research Centre, the longest study of wild elephants in the world.



Day 2

As the sun rises on your first full day out in the Kenyan bush, we suggest an early wake-up call so you can head out on a game drive to catch the animals as they wake up to start the day. The early morning is also when the animals are at their most active before the heat of the day sets in. Back at the lodge; breakfast is served with a wonderful view over the plains. After lunch, we suggest that you relax and enjoy your surroundings before your late afternoon game drive before returning to the lodge for dinner and your final evening in Amboseli.

Overnight at Amboseli Serena Safari Lodge - Standard Room(Full Board)

Day 3

This morning, it's another early start as you head off North towards Mt Kenya, which looms above the plains at a height of almost 5,200 metres. A UNESCO Natural World Heritage site, Mount Kenya was formed some three and half million years ago and is considered sacred by the Kikuyu people, who believe it is the abode of their god Ngai. You could spend all day gazing at the incredible views; however a number of activities are on offer for those who want a bit more than looking at the scenery. On offer are guided forest walks, trips up to the moorland zone of the mountain, and fishing for river trout (extra cost)

For dinner you will be offered a choice of dishes from the a-la-carte menu, with most food being sourced from the surrounding land and communities. The restaurant also has an extensive wine list.

Accommodation at Serena Mountain Lodge - Standard Room(Full Board)

Located at 2,194 on the slopes of Mount Kenya, the lodge is surrounded by a dense rain forest that comes alive at dusk with a myriad of sounds that make the African bush so special and exhilarating. The open-air viewing-deck looks down on to a water hole and salt-lick, which attracts numerous herds of elephant and buffalo. There is also a tunnel leading to a photo-hide, which offers spectacular viewing and photographic opportunities just meters away from the wildlife at the water hole.



Mt. Kenya region

Enjoy breathtaking views of Mount Kenya, standing 5,199 metres tall and a UNESCO Natural World Heritage site. Mount Kenya is an amazing three and half million years old and home to the sacred Ngai; God of the Kikuyu people. You could spend all day taking in the incredible views of the mountain, however a number of additional activities are on offer for those that wish to be more active, from guided forest walks, trips to the moorlands of the mountains, to a spot of trout fishing, Mount Kenya offers something for all of its visitors.



Day 4

Today we will rise early for breakfast before transferring to Samburu National Reserve with an en route game drive. As you enter the reserve, you will be able to see two beautiful mountains, Koitogor and Ololokwe, which form the perfect background to your safari. Large herds of elephants comprise some of the reserve's large and diverse wildlife population, which also includes numerous big cats, reticulated giraffes, buffalo and gerenuks. The Ewaso Nyiro River is the main attraction for wildlife here, but many animals can also be seen in the acacia trees, river forest, thorn trees and grasslands. In the late afternoon you will arrive at Samburu Lodge, which has been inspired by the architecture of the indigenous Samburu tribe and blends into its natural environment by making full use of the local building materials. This will be your home for the next two nights. From

your private veranda you can enjoy uninterrupted views of the languid river and the wildlife it attracts - which includes the numerous crocodiles that make these waters their home.

Accommodation at Samburu Game Lodge - Standard Room(Full Board)

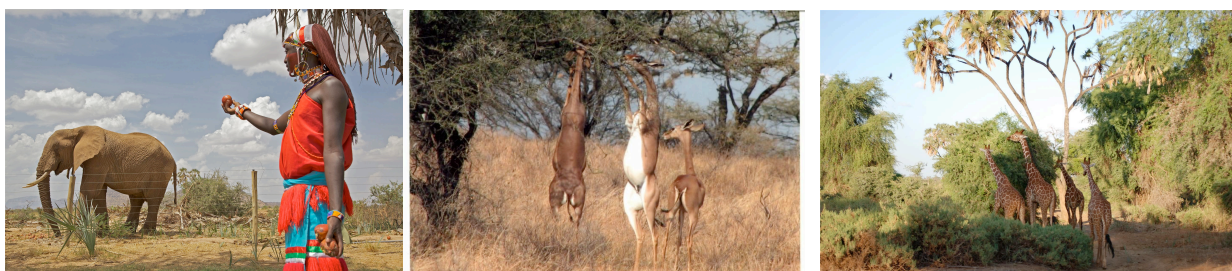
The Lodge has been inspired by the architecture of the indigenous Samburu tribe. Samburu lodge blends into its natural environment by making full use of native materials. Enjoy your private veranda with uninterrupted vistas of the languid river and the wildlife it attracts, as well as the countless crocodiles that make the waters, their home. The service is consistently of a high standard and the rooms are wonderfully located along the banks of the river.



Samburu National Park

Samburu National Reserve is situated alongside the Ewaso Nyiro River which attracts plenty of animals from the surrounding plains and various other habitats such as acacia, river forest, thorn trees and grasslands. Large herds of elephants, reticulated giraffes, buffalo and gerenuks and frequent spotting of big cats form part of the reserve's large and diverse wildlife population.

You will also be privileged to see the red-robed Samburu tribesmen bringing their cattle down to the river to drink. The lives of the Samburu like the Masai are centered on their livestock, their traditional source of wealth. After initiation, boys become morans and it becomes their job to protect both the humans and the livestock for predators.



Day 5

Sleep in or rise early today, but if you want to see the animals at their most active we recommend taking advantage of the cool early morning to maximise your game viewing experience. As you continue with your game drive through this wildlife rich reserve, watch out for the unique species only found north of the equator which include the helmeted guinea fowl, reticulated giraffe, gerenuk, Grevy's zebra and Beisa oryx. Seek relief from the hot African sun back at the lodge where you will spend the remainder of afternoon relaxing. As the day cools, you can return to the reserve for one last game drive and enjoy a sundowner at a beautiful location, before returning to Samburu Lodge for an opulent dinner before retiring to your room.

Overnight at Samburu Game Lodge - Standard Room(Full Board)

Day 6

This morning leave the unique species and landscapes of Samburu behind you as you head south towards Sweetwaters Game Sanctuary and the Sweetwaters Tented Camp where you will spend the night. Here you will experience a charming blend of under-canvas ambiance and safari luxury in a sheltered oasis beside a water hole set in the pristine calm of the private Ol Pejeta Conservancy. Your game viewing experience will commence this afternoon once the day's temperatures have cooled down. Ol Pejeta conservancy is home to all of the 'Big Five' members and, being one of only four private game conservancies found in Kenya, the area has a higher wildlife concentration than any of Kenya's national parks making it perfect for intimate game-viewing experiences.

Accommodation at Sweetwaters Serena Camp - Standard Room (Full Board)

Sweetwaters Tented Camp offers you a charming blend of under-canvas ambiance and safari luxury in a sheltered oasis, clustered around a water hole and set in the pristine calm of the private Ol Pejeta Conservancy,.



Ol Pajeta conservancy

Being the only park where the 'Big Five' and Chimpanzees can be seen, the Conservancy has a higher wildlife-to-area ratio than any Kenya National Parks, making it perfect for intimate game-viewing experiences. It is also where the fastest growing population of rhino in Africa can be found. There are southern white rhino and the endangered black rhino and in a special sanctuary the resides some of the Worlds' remaining northern white rhino.

The Waterhole Bar, built in the style of a game-viewing hide, overlooks the waterhole and offers unrivalled wildlife-watching. Other than Game drive, there is an opportunity for game walks, horse rides and even camel rides are available as well as nocturnal game drives.



Day 7

Today you will be heading down the Great Rift Valley to Lake Nakuru National Park. The area around Lake Nakuru Park has recently been widened to accommodate a rhino sanctuary - making it one of the largest concentrations of these animals in the country. Both white and black rhino can be seen here, and it is even possible to see them grazing along the lakes shores, often with their young in tow – a truly magical sight!!

Other species commonly found in this beautiful and intimate park include waterbuck, Rothschild's giraffe and giant python, with lions and leopards making the occasional appearance. This Park has a central lake, from which it borrows its name and sometimes, depending on the water levels has a slight pink tinge to it thanks to the thousands of resident flamingos. Flamingo Hill Camp is well situated in the heart of the park and offers comfortable accommodation in spacious tents and excellent service making it a pleasant place to spend your night. Game viewing in the park is excellent and you are sure to be able to tick off many of your must see animals. Dinner is a great opportunity to catch up with fellow travellers and share experiences and stories.

Accommodation at Flamingo Hill Camp - Tent (Full Board)

The Flamingo Hill Camp is situated within the famous Lake Nakuru National Park, which lies within the Great Rift Valley of Kenya. Small and exclusive, comprising 25 tents. The tents are furnished with the understated luxury required by the modern traveler. Decorated in calming safari tones, natural woods, wrought iron and crisp cottons each tent has been meticulously planned to maximise comfort.



Lake Nakuru National Park is a world heritage site renowned for its amazing birdlife, with over 450 bird species. The waters of the lake also draw a great variety of game to its shores and the picturesque landscape of marshes, woodland, grassland and large euphorbia forests. The Park boasts a rhino sanctuary and regular sightings of the elusive leopard.



Day 8

Today you are off to the real highlight of your safari, the Masai Mara National Reserve. This famous Reserve is known world over for its amazing game viewing so your three day stay promises to be action packed. A quick lunch at the Mara Sarova Game Lodge has been arranged before arriving at Mara Serena in the early afternoon. Mara Serena is fabulously located at the very centre of the Mara triangle overlooking the vast Mara plains. Spend the rest of the afternoon relaxing by the pool and waiting for the late afternoon when the temperature cools to head out on your first Mara game drive. Keep your eyes peeled as you hunt for the last members on your list. Back at the lodge; dinner is served, over which you have the perfect opportunity to look back on your day and relive all those highlights.

Accommodation at Mara Serena Safari Lodge - Standard Room(Full Board)

Perched on the saddle of a hill, Mara Serena Safari Lodge has one of the most spectacular views imaginable across the vast plains & rivers that make up the Mara Triangle - one of the world's richest wildlife sanctuaries. Each luxuriously presented room is accommodated in its own stand-alone modular unit, with uninterrupted views, private balcony and spacious seating area.



Day 9

Sunrise on day two in the Mara means an early start as you set off on an early morning game drive before returning to the lodge for breakfast, with a view, as you watch over the Mara plains. After lunch why not explore the grounds with a guide and learn about the smaller members of the Mara eco-system (extra cost). After lunch, the pool is a welcome sight as you again wait for the heat to subside and that all important game drive.

Overnight at Mara Serena Safari Lodge - Standard Room(Full Board)

Day 10

Explore the Mara from a different angle today as you soar above the plains and watch the sun rise from a hot air balloon (at an extra cost). A luxurious way to spend your final morning in the Mara. After your flight, a champagne breakfast will be served out in the bush, what a perfect way to toast the end of your safari! After your morning 'adventure' you can return to the lodge for a much needed rest before the final game drive of your safari. Dinner is a great opportunity to look back over your stay and your photos and perhaps start planning next year's safari?

Overnight at Mara Serena Safari Lodge - Standard Room(Full Board)

Day 11

Today you return to Nairobi in time for your international flight home. But not before stopping on the edge of the rift valley for that all important last photo.