

MAGICAL BWINDI

ENTEBBE | BWINDI

4 days | 3 nights

Uganda is a land of contrasts. In half a day you can drive from mist-shrouded volcanic mountains to hot hazy savannah, dappled with wildlife. Serene undulating hills of tea plantations, lush but ordered, give way to tangled jungle and rainforest with the musical accompaniment of chaotic, cacophonous birdlife. Uganda is alive with these contrasts: The tiniest sunbirds, iridescent in the morning light, the massive lumbering yet silent elephant, disappearing like a vapor behind the trees, the chimpanzees crashing about the forest canopy, the lugubrious gorilla, chewing thoughtfully in the bamboo thicket. There is the Nile, twisting its way north like a shimmering ribbon, through arid semi-desert scattered about with rocky kopjes.

Snow-capped peaks, tropical, sandy, freshwater beaches, and smiling faces everywhere. It is all here, a feast for all the senses.

Let us show you the Uganda we know and love.

This is Africa: the way it should be!



ITINERARY OVERVIEW

Day 1

Arrive at Entebbe Airport. Meet and greet by our Driver/Guide who will transfer you to your accommodation in Entebbe (+/-15 minutes).

Overnight at Laico Lake Victoria Hotel (BB).

Day 2

Early morning pickup at 06h00 from your hotel and transfer to Entebbe Airport (+/- 15 minutes) for a scheduled flight to Kisoro (07h45/08h55). Pick up from Kisoro Airstrip and transfer by road for 2 hours to Clouds Mountain Gorilla Lodge in the southern sector of Bwindi Impenetrable Forest National Park.

In the afternoon visit the Batwa Community.

Overnight at Clouds Mountain Gorilla Lodge (FB + non-premium brand drinks).

Day 3

Full day Gorilla tracking (depending on gorilla permit availability)

Overnight at Clouds Mountain Gorilla Lodge (FB + non-premium brand drinks).

Day 4

After breakfast, transfer by road 2 hours from Clouds Mountain Gorilla Lodge to Kisoro Airstrip to catch a scheduled flight from Kisoro/Entebbe (09h10/11h25). (note that the scheduled flight makes two stops at different airstrips before arriving in Entebbe Airport hence the difference in time from the direct flight Entebbe – Kisoro on day 2). Stay at Entebbe Airport and connect to your outbound International flight.

End of your safari and our services

DETAILED ITINERARY

Day 1

Arrive at Entebbe Airport. Meet and greet by our Driver/Guide who will transfer you to your accommodation in Entebbe (+/-15 minutes). This hotel is a great boutique hotel with a swimming pool and lovely restaurant.

40 kms South of Kampala (approximately 1 hour driving time from Kampala, depending upon traffic)

Entebbe is the second major town in Uganda. Located on Lake Victoria's peninsula, it is the location of Entebbe International Airport, Uganda's largest commercial and military airport, best known for the dramatic rescue of 100 hostages in the 1970s. Entebbe is also the location of State House, the official office and residence of the President of Uganda. Entebbe offers many good hotels of varying standards and sizes and is often used as a stopover in and out of Uganda due to its proximity to the International Airport.

Spacious and elegant, entirely refurbished and redecorated, this classic colonial style 4* property is a true oasis of tranquility. It nestles in lush tropical gardens, amidst majestic Royal palm trees, while its verandas and terraces overlook the calm beauty of Lake Victoria. It is conveniently located only 15 minutes away from Entebbe International Airport.

Overnight at Laico Lake Victoria Hotel (BB).

Day 2

Early morning pickup at 06h00 from your hotel and transfer to Entebbe Airport (+/- 15 minutes) for a scheduled flight to Kisoro (07h45/08h55). Pick up from Kisoro Airstrip and transfer by road for 2 hours to Clouds Mountain Gorilla Lodge in the southern sector of Bwindi Impenetrable Forest National Park.

In the afternoon visit the Batwa Community.

Nestled down in the Southwest of the country, on the edge of the Western Rift Valley this 331km² of montane rainforest is the only forest in Africa where gorillas and chimpanzees occur together. The world population of mountain gorillas is currently estimated at about 880, half of which live in Bwindi, alongside an estimated 350-400 chimpanzee. In addition, this ancient rainforest one of the few in Africa to have flourished throughout the last Ice Age (making it over 25,000 years old) – is home to several other mammals (approximately 93 species) as well as roughly 360 species of bird, including 22 of the 23 Albertine Rift endemic species. The most sought-after activity in and around Bwindi is gorilla tracking; but there is also opportunity for Community and Batwa experiences and bird watching excursions.





Built of local volcanic stone, each of the 7 cottages has a large sitting room with fireplace, vast overstuffed armchairs, and hand-woven carpets. There are soaring ceilings, massive exposed wooden beams, big picture windows with endless views of treetops, volcanoes and mountains. There is a gentle, warm welcome, serene dedication from the personal butlers and smiles on the faces of all the staff. It is a short walk from the lodge to the Nkuringo trailhead or transfer to the Rushaga base in order to track the gorillas. Clouds, with the ultimate goal of protecting the natural habitat of the mountain gorilla, directly benefits the community of Nkuringo in a multitude of ways as they have a significant stake in the lodge and its income. It was built in conjunction with AWF, USAID, IGCP and NCCDF and

offers many community-based activities. It is the ultimate in accommodation in either Northern or Southern Bwindi.

Overnight at Clouds Mountain Gorilla Lodge (FB + non-premium brand drinks).

Day 3

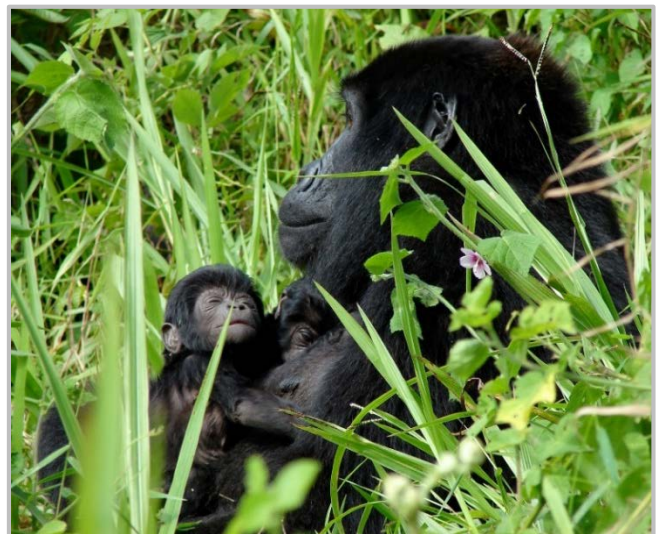
Full day Gorilla tracking in the Nkuringo area.

Up relatively early for a hearty breakfast to give you the energy needed for your gorilla track. By 08h00, report to the ranger station for registration and a talk by one of the rangers. The guides will then take you through the bush pushing your way through the undergrowth, parting thick creepers, to track the gorillas. The track can take from half an hour to 7 hours – a good degree of fitness is required as well as a sturdy pair of walking shoes.

Once you are close to the group the guides will ask you to leave behind your bags as no food items should be carried close to the gorillas. Just take your cameras with you as you are about to meet the gentle giants! Sit in the forest amongst the gorillas, listening to them grumble to each other and marvel at the sheer size of the dominant male: the silverback.

It is an extraordinary feeling sitting in the dense rainforest knowing you are with a few of the last remaining mountain gorillas – sadly enough, there are only about 880 of these beautiful creatures left. You are allowed an hour with the gorillas before returning to the base station.

Note: please listen to the instructions of the local rangers at all times. It is forbidden to approach the gorillas closer than 5 meters, to feed them or to use flash photography. Likewise, for your and their safety! While walking, please feel free to ask guides to slow down if they are going too fast and if you need a rest. There is the additional option to hire porters on site (something we highly recommend: one is supporting sustainable employment and they can be invaluable in slippery and steep terrain).



The Uganda Wildlife Authority does not allow tracking when you are ill as gorillas are very susceptible to human diseases. Should you feel sick on the day of the track we urgently advise you to abide by this rule. In order to receive a 50% refund of the permit cost you must get a valid doctor's report that day.

We must also stress that, while you have a very good chance of seeing gorillas, success is not guaranteed (although success is at least 99.5 %!). They are wild creatures with no fixed routine and finding them requires the skills and experience of your tracker and guides, as well as luck. The trackers and guides have helped to habituate the gorilla groups and know

them intimately. They will take you to the area where they left the gorillas the day before. Before leaving they may be able to suggest how long the hike might be.

Overnight at Clouds Mountain Gorilla Lodge (FB + non-premium brand drinks).

Day 4

After breakfast, transfer by road 2 hours from Clouds Mountain Gorilla Lodge to Kisoro Airstrip to catch a scheduled flight from Kisoro/Entebbe (09h10/11h25). (note that the scheduled flight makes two stops at different airstrips before arriving in Entebbe Airport hence the difference in time from the direct flight Entebbe – Kisoro on day 2). Stay at Entebbe Airport and connect to your outbound International flight.

*******End of your safari and our services*******